

Goat Anti-Arylsulfatase D Antibody
Peptide-affinity purified goat antibody
Catalog # AF1116a**Specification**

Goat Anti-Arylsulfatase D Antibody - Product Information

Application	WB, E
Primary Accession	P51689
Other Accession	NP_033667 , 414
Reactivity	Human
Host	Goat
Clonality	Polyclonal
Concentration	100ug/200ul
Isotype	IgG
Calculated MW	64860

Goat Anti-Arylsulfatase D Antibody - Additional Information**Gene ID** 414**Other Names**

Arylsulfatase D, ASD, 3.1.6.-, ARSD

Dilution

WB~~1:1000

E~~N/A

Format

0.5 mg IgG/ml in Tris saline (20mM Tris pH7.3, 150mM NaCl), 0.02% sodium azide, with 0.5% bovine serum albumin

Storage

Maintain refrigerated at 2-8°C for up to 6 months. For long term storage store at -20°C in small aliquots to prevent freeze-thaw cycles.

Precautions

Goat Anti-Arylsulfatase D Antibody is for research use only and not for use in diagnostic or therapeutic procedures.

Goat Anti-Arylsulfatase D Antibody - Protein Information**Name** ARSD**Cellular Location**

Lysosome.

Tissue Location

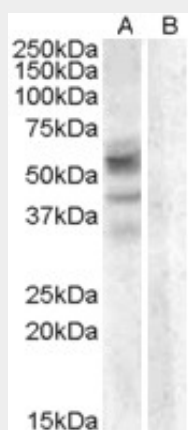
Expressed in the pancreas, kidney, liver, lung, placenta, brain and heart

Goat Anti-Arylsulfatase D Antibody - Protocols

Provided below are standard protocols that you may find useful for product applications.

- [Western Blot](#)
- [Blocking Peptides](#)
- [Dot Blot](#)
- [Immunohistochemistry](#)
- [Immunofluorescence](#)
- [Immunoprecipitation](#)
- [Flow Cytometry](#)
- [Cell Culture](#)

Goat Anti-Arylsulfatase D Antibody - Images



AF1116a (0.3 µg/ml) staining of A459 lysate (35 µg protein in RIPA buffer) with (B) and without (A) blocking with the immunising peptide. Primary incubation was 1 hour. Detected by chemiluminescence.

Goat Anti-Arylsulfatase D Antibody - Background

The protein encoded by this gene is a member of the sulfatase family. Sulfatases are essential for the correct composition of bone and cartilage matrix. This encoded protein is postrationally glycosylated and localized to the lysosome. Two transcript variants encoding different isoforms have been found for this gene.

Goat Anti-Arylsulfatase D Antibody - References

Complete sequencing and characterization of 21,243 full-length human cDNAs. Ota T, et al. Nat Genet, 2004 Jan. PMID 14702039.
Generation and initial analysis of more than 15,000 full-length human and mouse cDNA sequences. Strausberg RL, et al. Proc Natl Acad Sci U S A, 2002 Dec 24. PMID 12477932.
Arylsulfatase D gene in Xp22.3 encodes two protein isoforms. Urbitsch P, et al. DNA Cell Biol, 2000 Dec. PMID 11177574.
Expression profiling of human sulfotransferase and sulfatase gene superfamilies in epithelial tissues and cultured cells. Dooley TP, et al. Biochem Biophys Res Commun, 2000 Oct 14. PMID 11027669.
Characterization of a cluster of sulfatase genes on Xp22.3 suggests gene duplications in an ancestral pseudoautosomal region. Meroni G, et al. Hum Mol Genet, 1996 Apr. PMID 8845834.